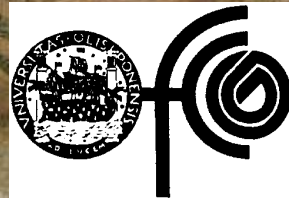


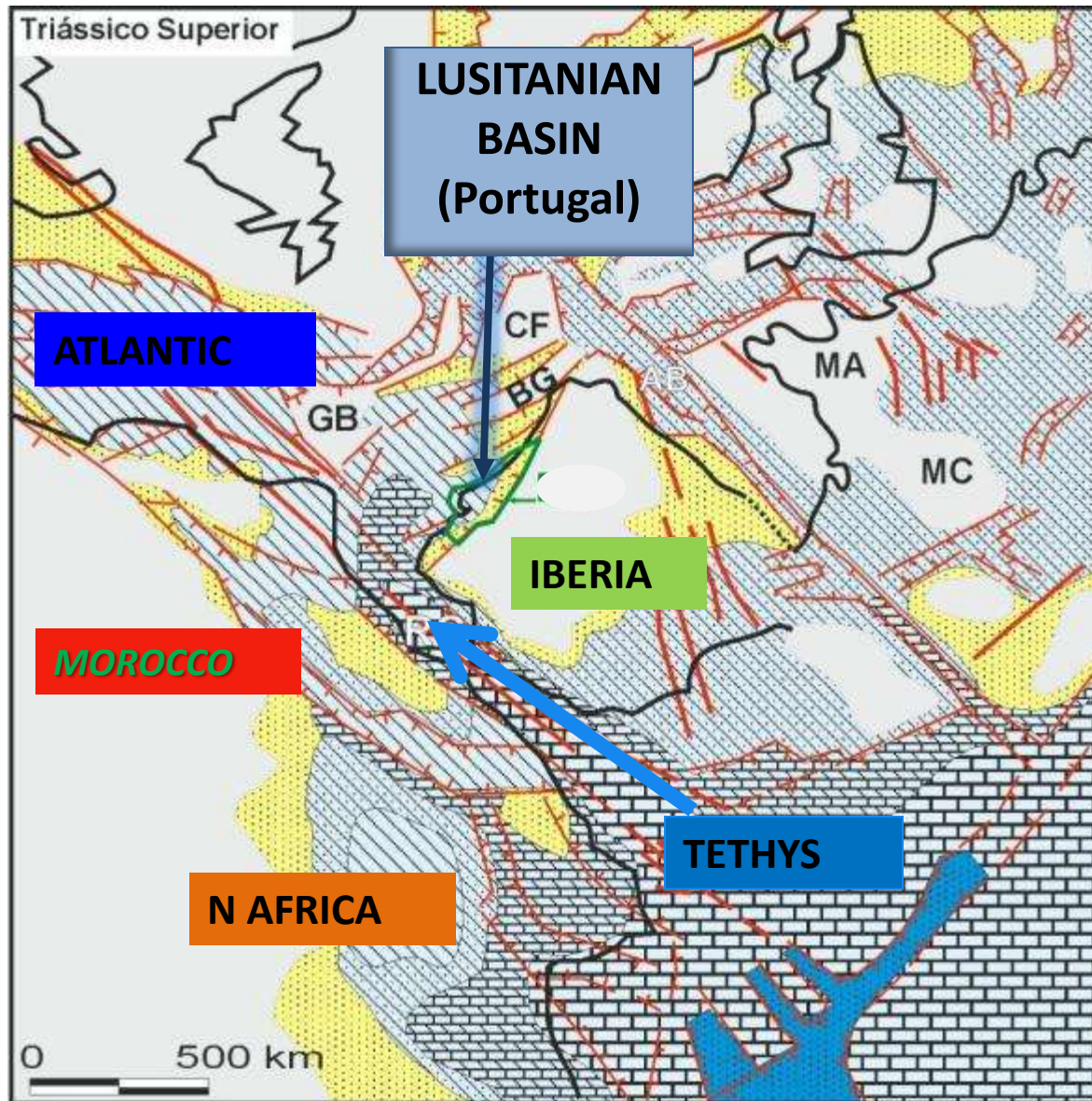
THE LUSITANIAN BASIN (PORTUGAL): A NEW SYNTHETIC LITHOSTRATIGRAPHIC AND GEODYNAMIC CHART

Rui **PENA DOS REIS** (*Univ. Coimbra, Portugal*)

Nuno **PIMENTEL** (*Univ. Lisboa, Portugal*)

A.J.V. **GARCIA** (*Univ. Fed. Sergipe, Brasil*)

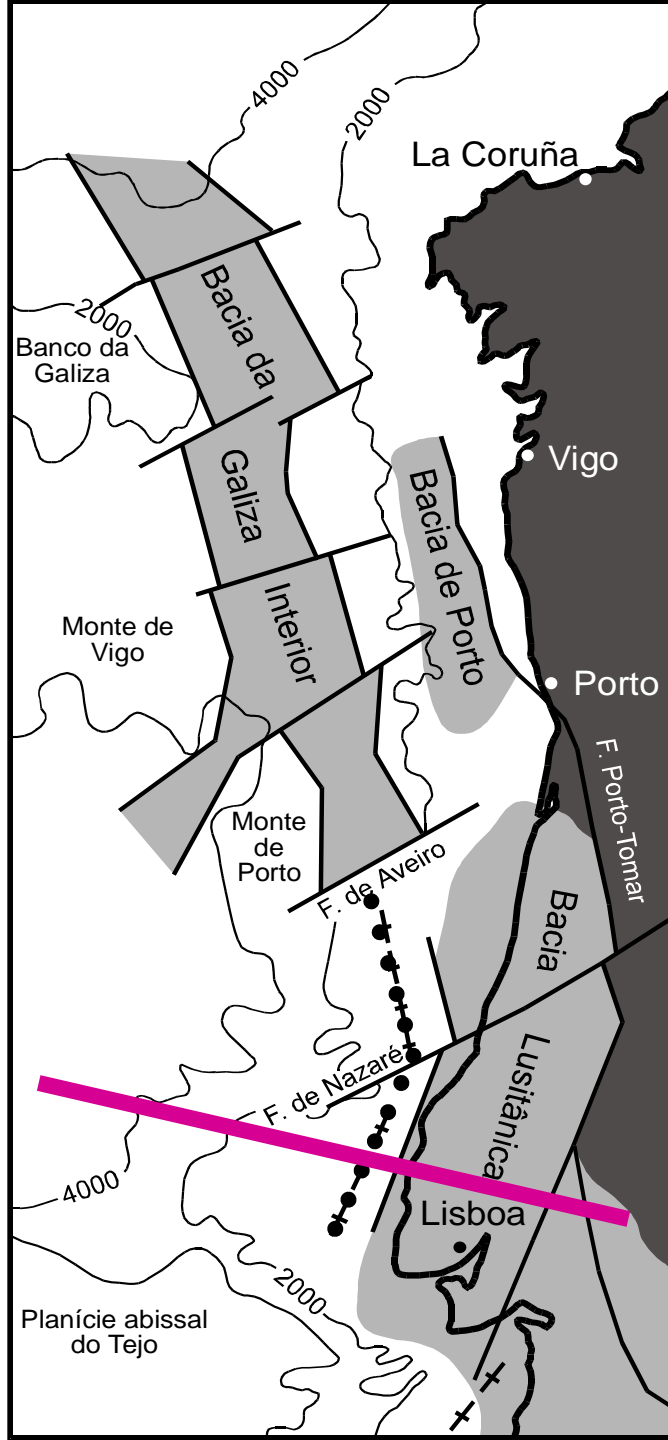




GEODYNAMIC FRAMEWORK OF IBERIA IN UPPER TRIASIC

Modif. de Ziegler, 1988

Modif. Ziegler, 1988



The Lusitanian Basin in the western atlantic margin and its relationship with other neighbouring western iberian Mesozoic sedimentary basins.

100 km



Basins



Basement

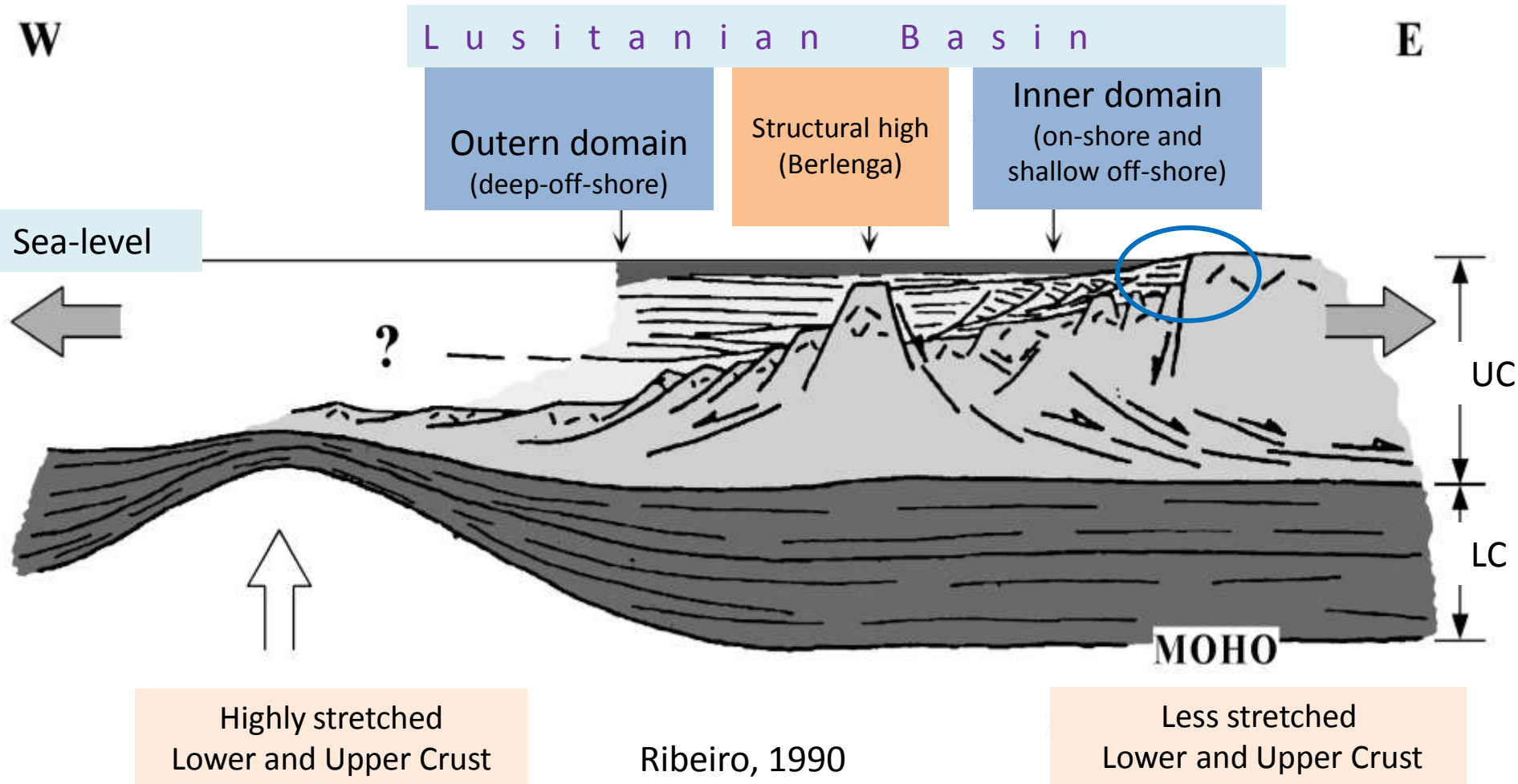


Horst das Berlengas

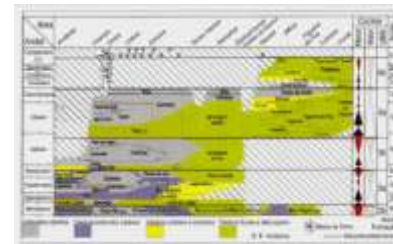
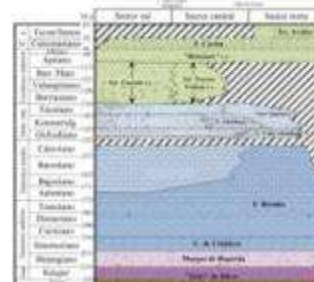
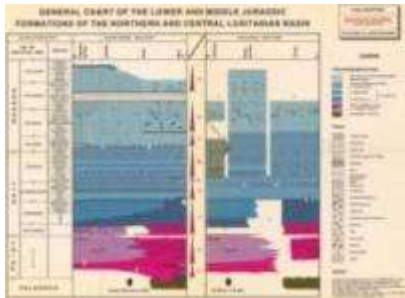
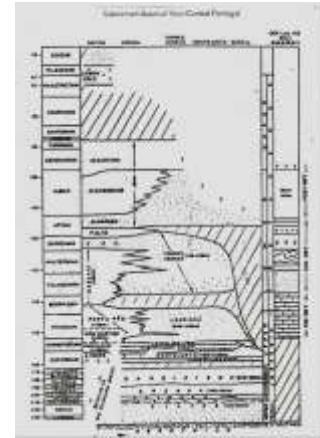
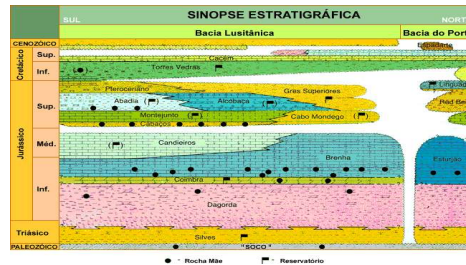
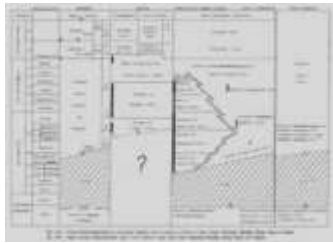


4000 Batimetria em metros

TRANSVERSE PROFILE OF THE IBERIAN MARGIN, AT THE NORTH-EASTERN ATLANTIC MARGIN



MAIN FORMER CHARTS WITH THE STRATIGRAPHIC FRAMEWORK FOR THE LUSITANIAN BASIN



Partial stratigraphic synthesis charts published in **1980**, based on previous works by several authors.

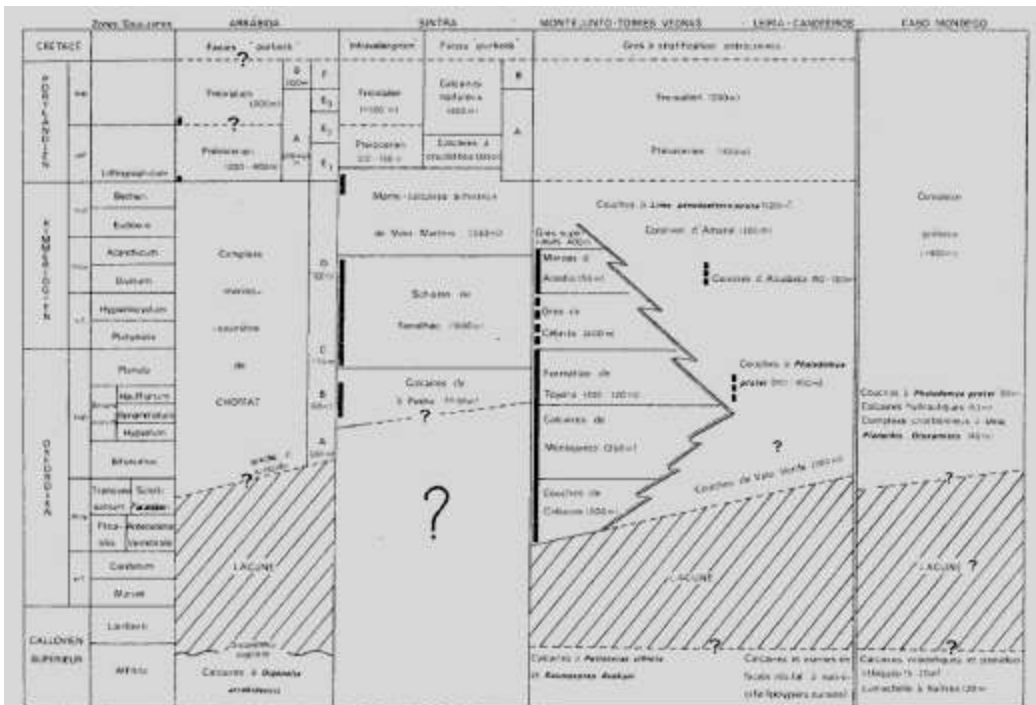


Fig. 3.38. — Unité stratigraphique du Jurassique supérieur dans le Nord du Togo, d'après Mouton, Rambe, Roche, Ruge et Tassin.

Fig. 3.38. — Upper Jurassic stratigraphy north of the Northern Togo basin (after Mouton, Rambe, Roche, Ruge and Tassin).

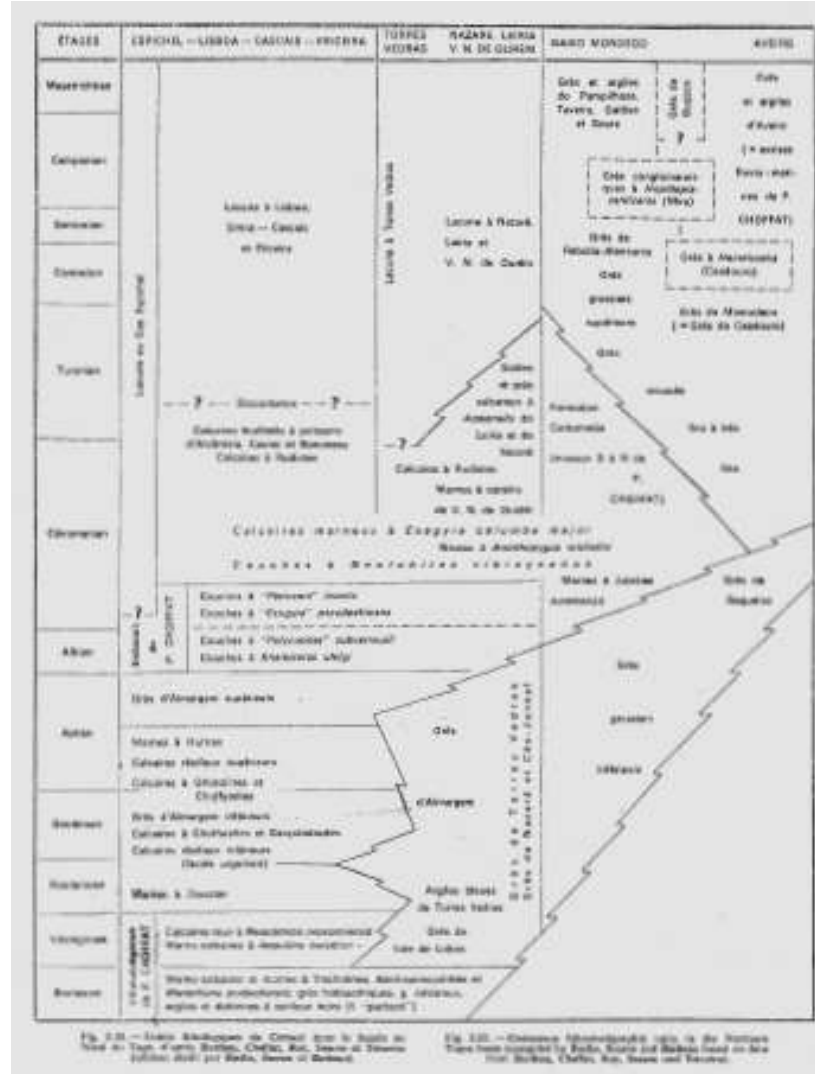


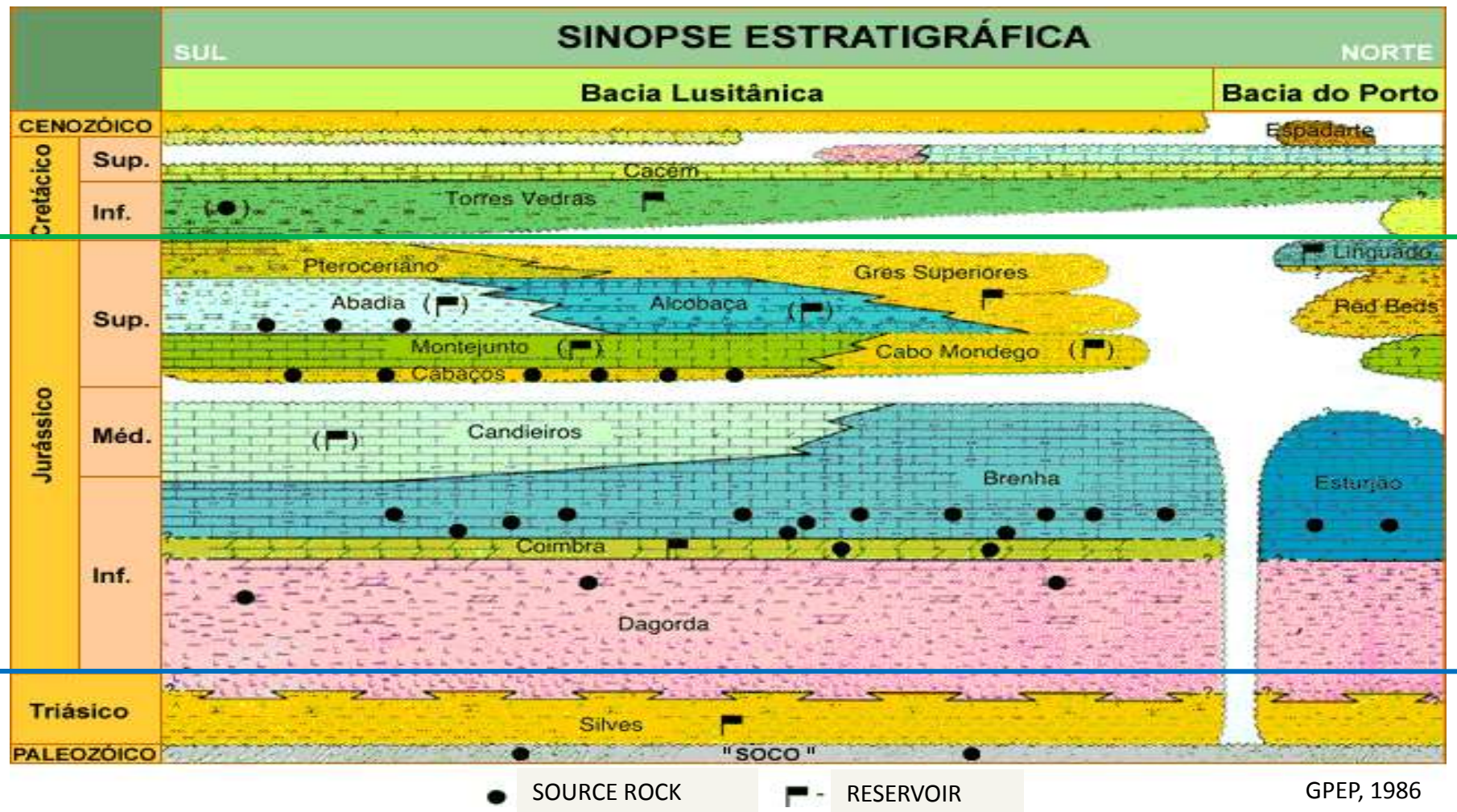
Fig. 3.39. — Unité stratigraphique du Jurassique supérieur dans le Bassin du Nord du Togo, d'après Mouton, Rambe, Roche, Ruge et Tassin.

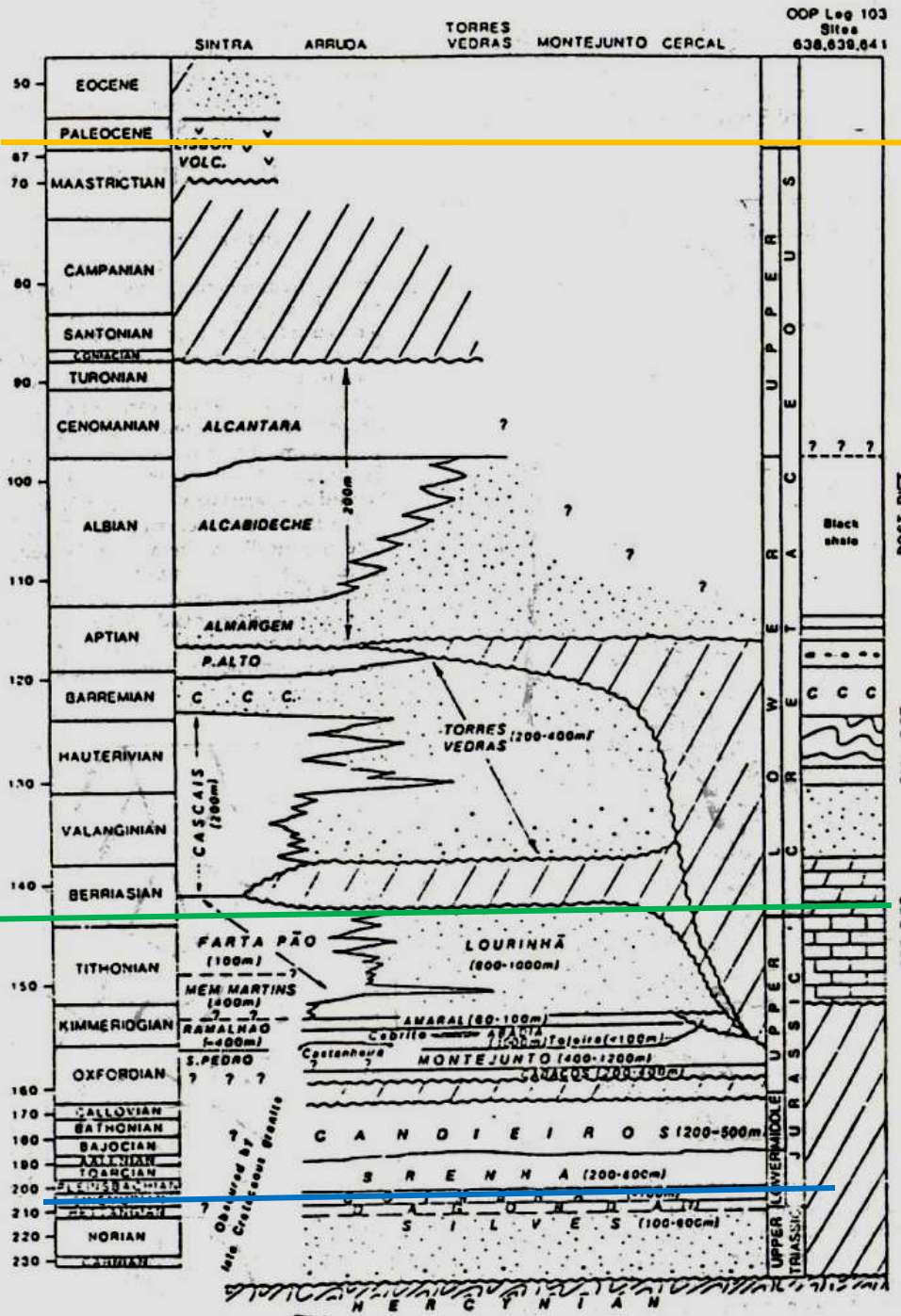
Fig. 3.39. — Upper Jurassic stratigraphy north of the Northern Togo basin (after Mouton, Rambe, Roche, Ruge and Tassin).

CRETACEOUS

UPPER JURASSIC

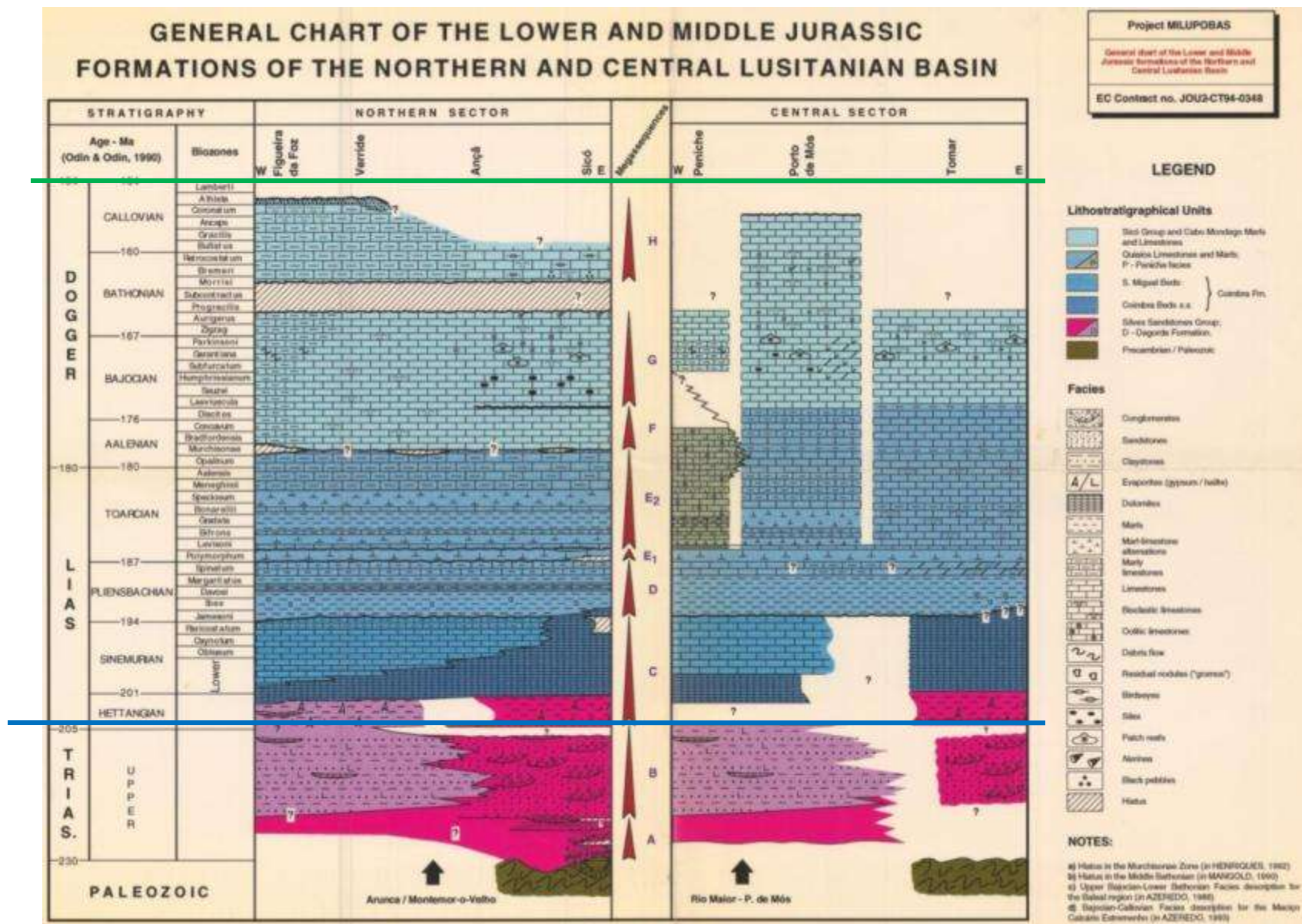
Synthesis Chart published by the Portuguese Oil Agency (GPEP) in **1986**, based in previous publications and oil exploration unpublished data



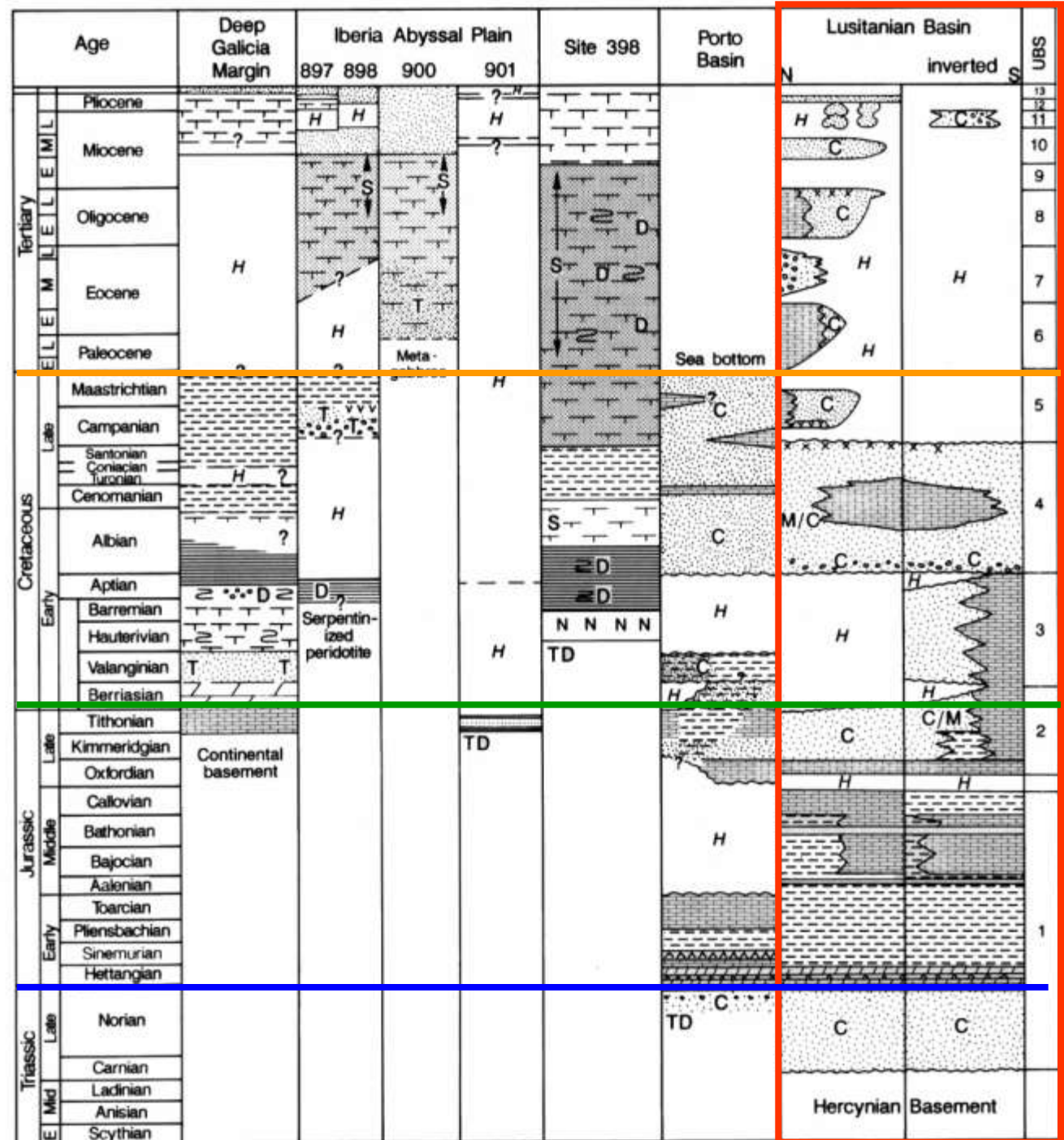


Synthesis proposed
by R.C.L. Wilson in
1988, based on
previous works by
P.Choffat, C.Palain,
G.Manupella, J.Rey,
M.Ramalho, R.Rocha,
F.Guery, GPEP, and others.

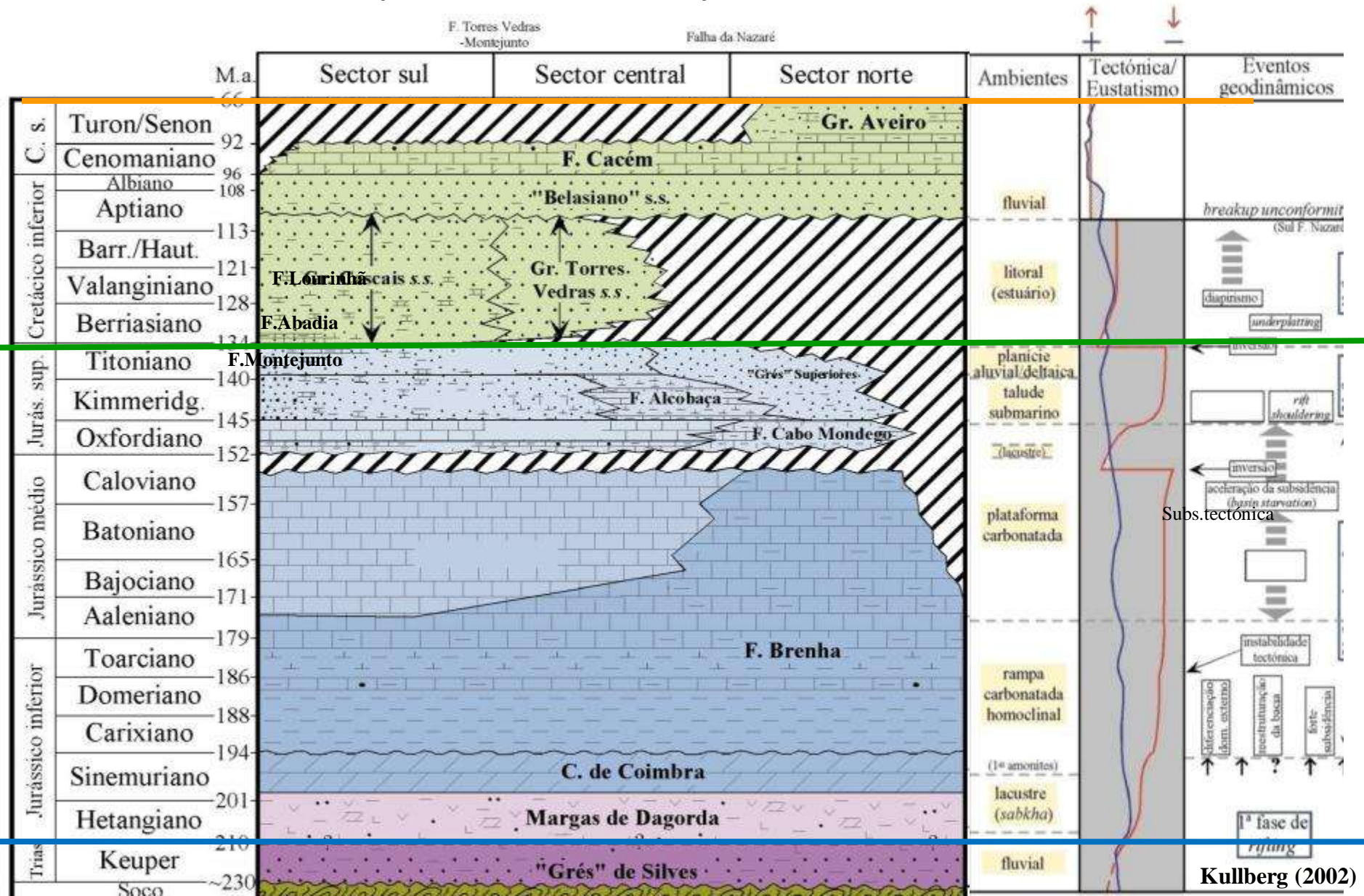
Chart from Milupobas Contract, developed by academics (Rocha et al.) for the Portuguese Oil Agency (GPEP, 1996)



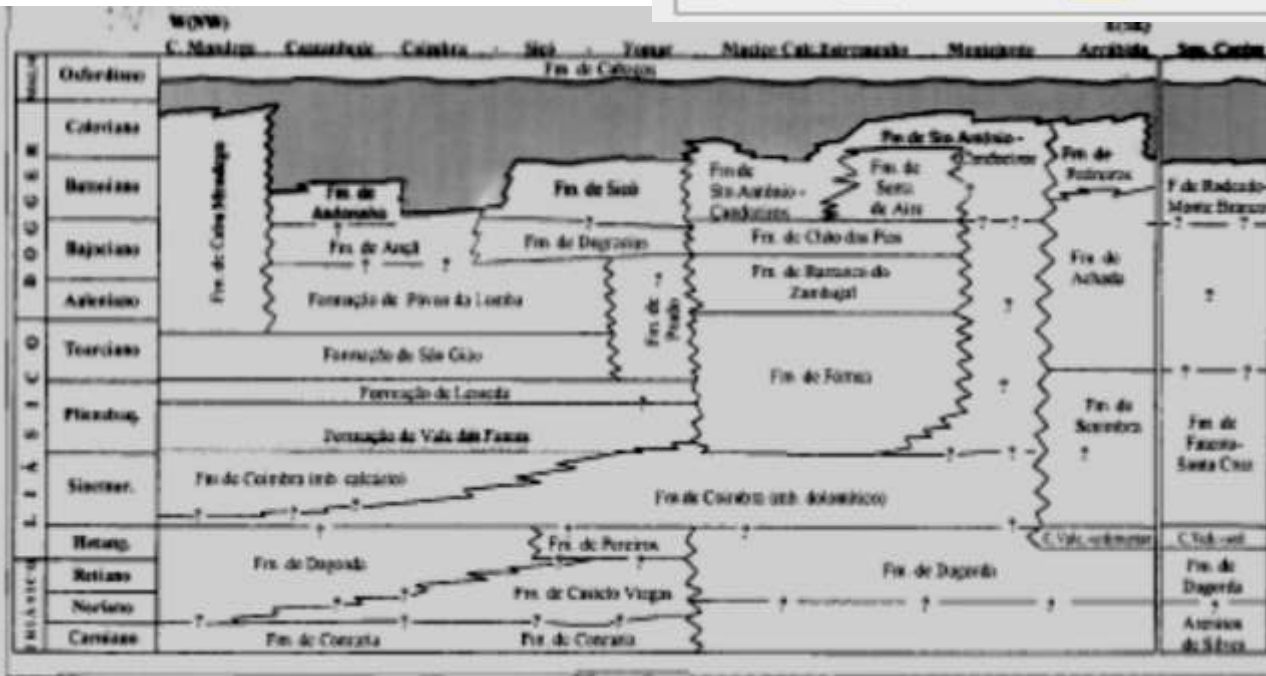
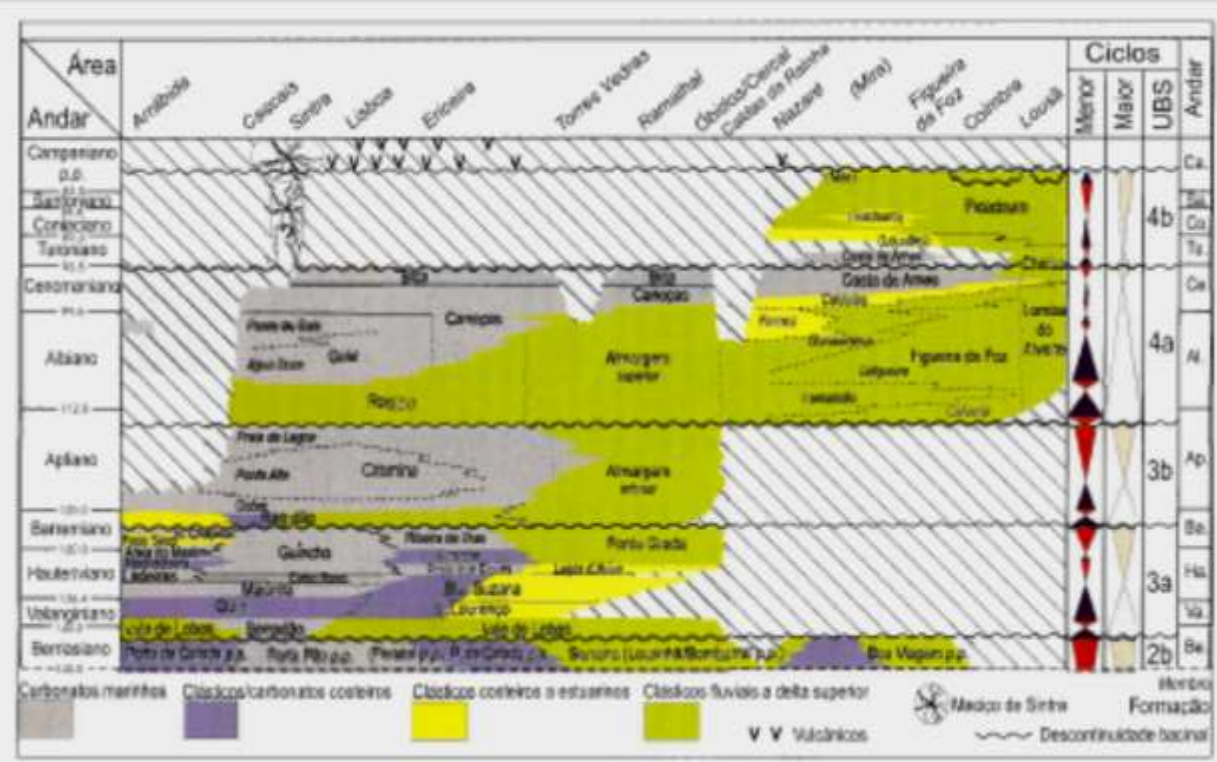
1996)



Stratigraphic Chart presented by Kullberg (2002), based on previous works by several authors



Partial stratigraphic synthesis charts published in Azeredo et al. **2003** & Rey et al. **2005**, based on previous works by several authors.

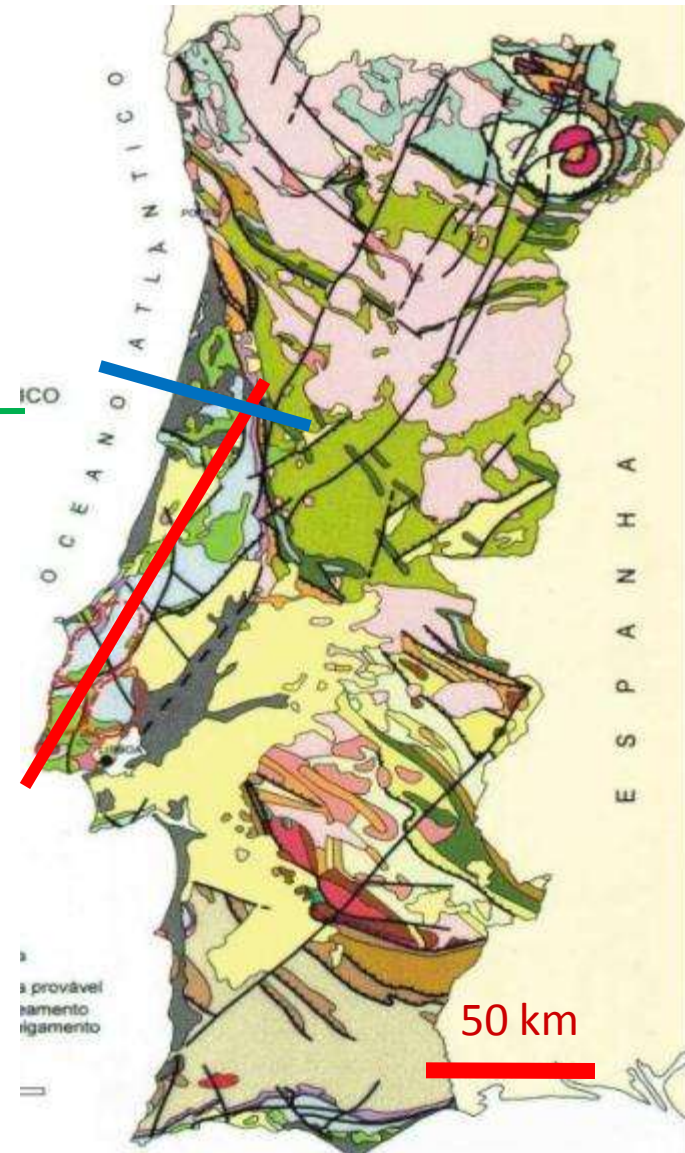
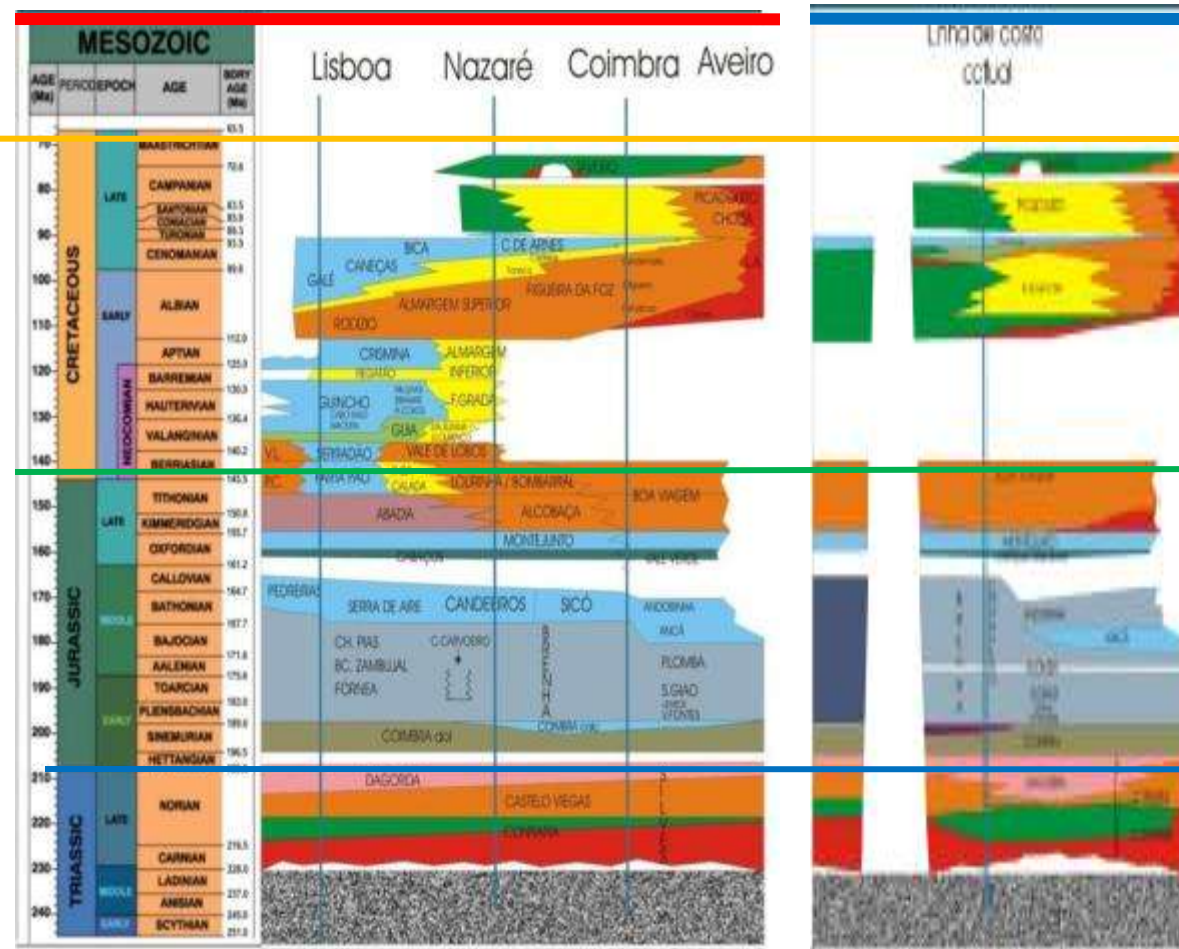


CRETACEOUS

LOWER and MIDDLE JURASSIC

NEW LITOSTRATIGRAPHIC CHART

by Pena dos Reis, Pimentel & Garcia (2007)



MESOZOIC				
AGE (Ma)	PERIOD	EPOCH	AGE	BDRY AGE (Ma)
70	CRETACEOUS	LATE	MAASTRICHTIAN	65.5
70.6			CAMPANIAN	70.6
80			SANTONIAN	83.5
85.8			CONIACIAN	85.8
89.3			TURONIAN	89.3
93.5			CENOMANIAN	93.5
99.6		EARLY	ALBIAN	99.6
112.0			APTIAN	112.0
125.0		NEOCOMIAN	BARREMIAN	125.0
130.0			HAUTERIVIAN	130.0
136.4			VALANGINIAN	136.4
140.2			BERRIASIAN	140.2
145.5			TITHONIAN	145.5
150.8	JURASSIC	LATE	KIMMERIDGIAN	150.8
155.7			OXFORDIAN	155.7
161.2			CALLOVIAN	161.2
164.7		MIDDLE	BATHONIAN	164.7
167.7			BAJOCIAN	167.7
171.6			ALENIAN	171.6
175.6			TOARCIAN	175.6
183.0		EARLY	PLIENSCHACHIAN	183.0
189.6			SINEMURIAN	189.6
196.5			HETTANGIAN	196.5
199.6	TRIASSIC	LATE	NORIAN	199.6
216.5			CARNIAN	216.5
228.0			LADINIAN	228.0
237.0		MIDDLE	ANISIAN	237.0
245.0		EARLY	SCYTHIAN	245.0
251.0				251.0

